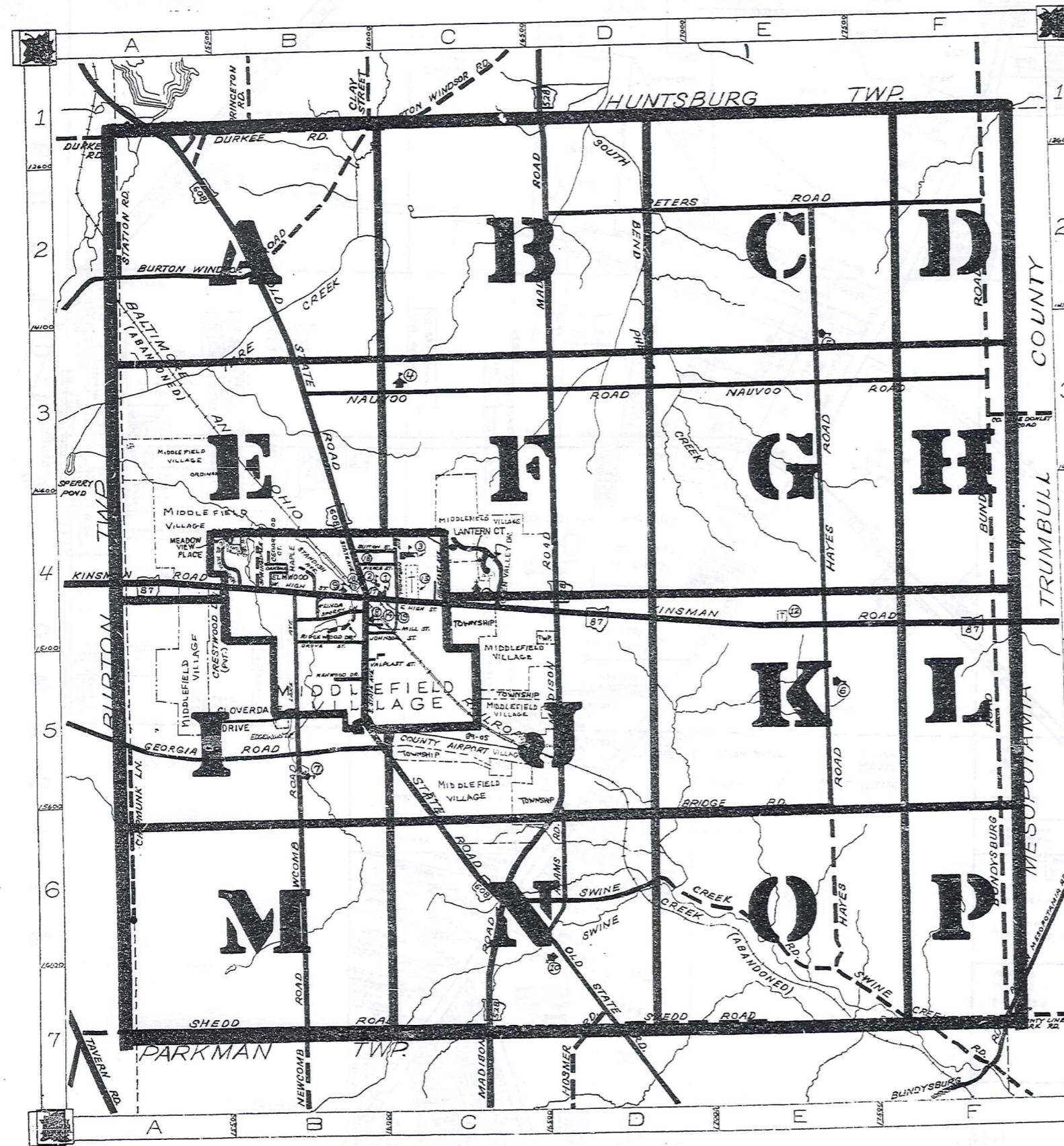


ROAD INDEX

SCALE IN 1/10 OF AN INCH
1-800-345-7334



M.V. = MIDDLEFIELD VILLAGE

A	ADAMS RD. D6 I	R	RIDGEWOOD DR. (M.V) B4
B	BRIAN CT MV BRIDGE RD D6-F6 BUNDYSBURG RD. F1-F7 BURTON WINDSOR RD. A2-B1 BUTTON ST. (M.V) BH	S	SHEDD RD. A7-E7 S. STATE AVE. (M.V) B4-B5 SPERRY LN. (M.V) B4 SPRINGDALE AVE. (M.V) B4 STANDISH AVE. (M.V) B4 STATION RD. A1-A2 SWINE CREEK RD. C6-F7
C	CEDARWOOD CT. (M.V) B4 CHIPWUNK LN. A5-A6 CLOVERDALE DR. B5 CRESTWOOD DR. (P.V) B4	L	LAKE AVE (M.V) B4-B5 LAKEVIEW DRIVE (M.V) B4 LANTERN COURT (M.V) C4 LINDA AVE (M.V) B4
D	DURKEE RD. A1-B1	T	THOMPSON AVE. (M.V) C4
E	E. HIGH ST. (M.V) B4-C4 ELMWOOD ST. MV EDGEWOOD DR. M.V.	M	MADISON RD. D1-C7 MAPLE AVE. (M.V) B4 MEADOW VIEW PL. A4-B4 MILL ST. (M.V) B4
F	F. HIGH ST. (M.V) B4-C4 ELMWOOD ST. MV EDGEWOOD DR. M.V.	N	NANTUCKET DR. (M.V) B4 NAUVOO RD. B3-F3 NEWCOMB RD. B5-B7 N. STATE AVE. (M.V) B4 NORTHVIEW DR. (M.V) B4
G	GEORGIA RD. A5-B5 GLEN VALLEY DR. (M.V) GROVE ST. (M.V) GURA RD. A1	O	OSKDALE (M.V) B4 OLD STATE RD. A1-D7
H	HAYES RD. E2-E7 HILLCREST AVE. (M.V) C4 HOSMER RD. D7	P	PETERS RD. D2-F2 PIERCE ST. (M.V) B4

- 1 CARDINAL JUNIOR HIGH SCHOOL
- 2 MIDDLEFIELD ELEMENTARY SCHOOL
- 3 CARDINAL HIGH SCHOOL
- 4 AMISH SCHOOL
- 5 AMISH SCHOOL
- 6 AMISH SCHOOL
- 7 AMISH SCHOOL
- 8 THE FIRST METHODIST CHURCH
- 9 WESLEYAN METHODIST CHURCH
- 10 MENNONITE CHURCH
- 11 ST. LUCA'S CATHOLIC CHURCH
- 12 HAYES CORNERS CEMETERY
- 13 MIDDLEFIELD CEMETERY
- 14 UNITED STATES POST OFFICE
- 15 MIDDLEFIELD VOL. FIRE DEPT.
- 16 MIDDLEFIELD MUNICIPAL CENTER
- 17 MIDDLEFIELD PUBLIC LIBRARY
- 18 BETHESDA NURSING HOME
- 19 MIDDLEFIELD TOWN HALL

MIDDLEFIELD TOWNSHIP

SCALE: 1"=2000'
ROBERT L. PHILLIPS,
GEAUGA COUNTY ENGINEER

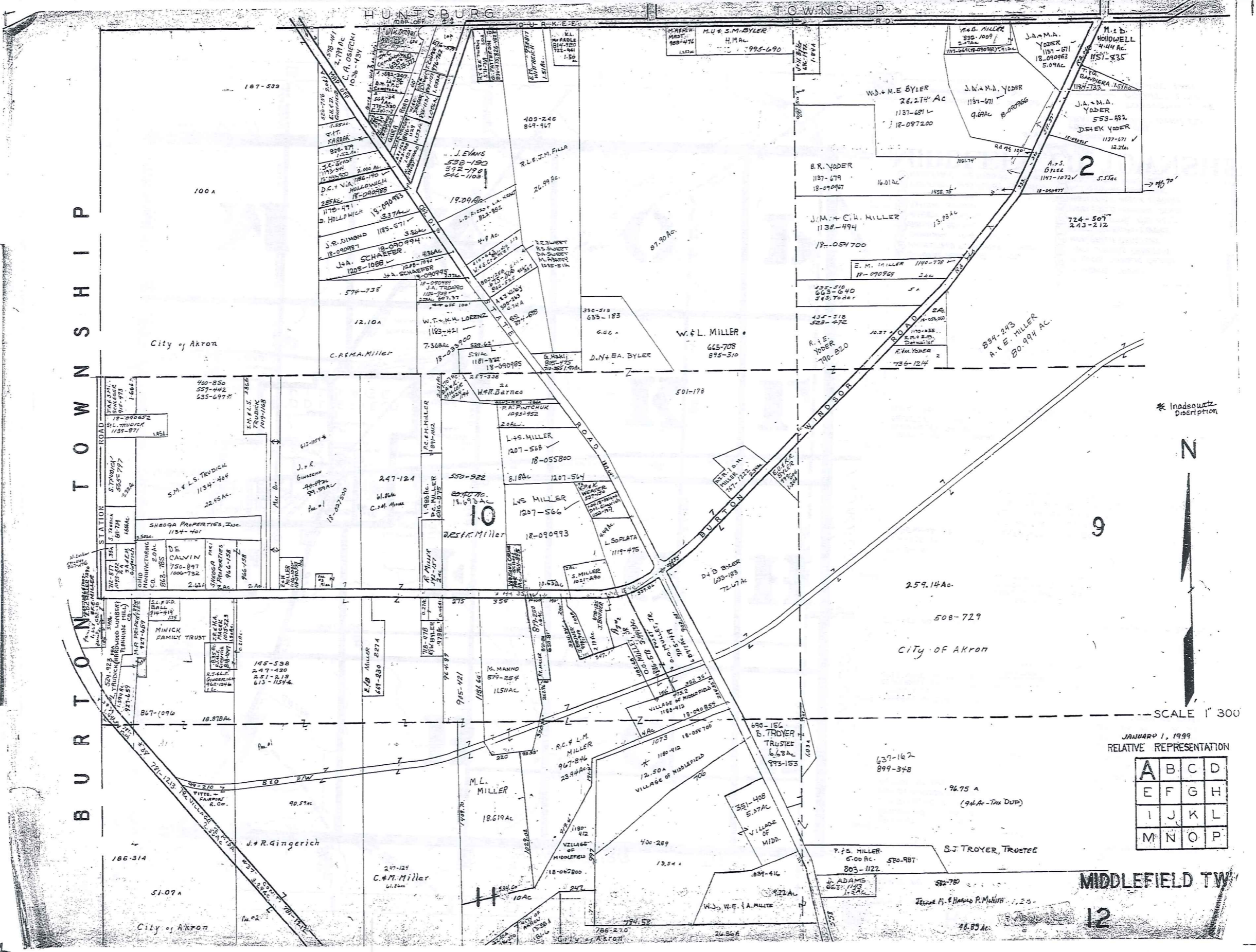
- UNPAVED ROADS
- PAVED ROADS
- RAILROAD
- TOWNSHIP LINE
- COUNTY LINE
- VILLAGE LINE



BURTON TOWNSHIP

1-800-345-7334

SCALE IN 1/16 OF AN INCH



* Inadequate Description



SCALE 1" = 300'

JANUARY 1, 1999
RELATIVE REPRESENTATION

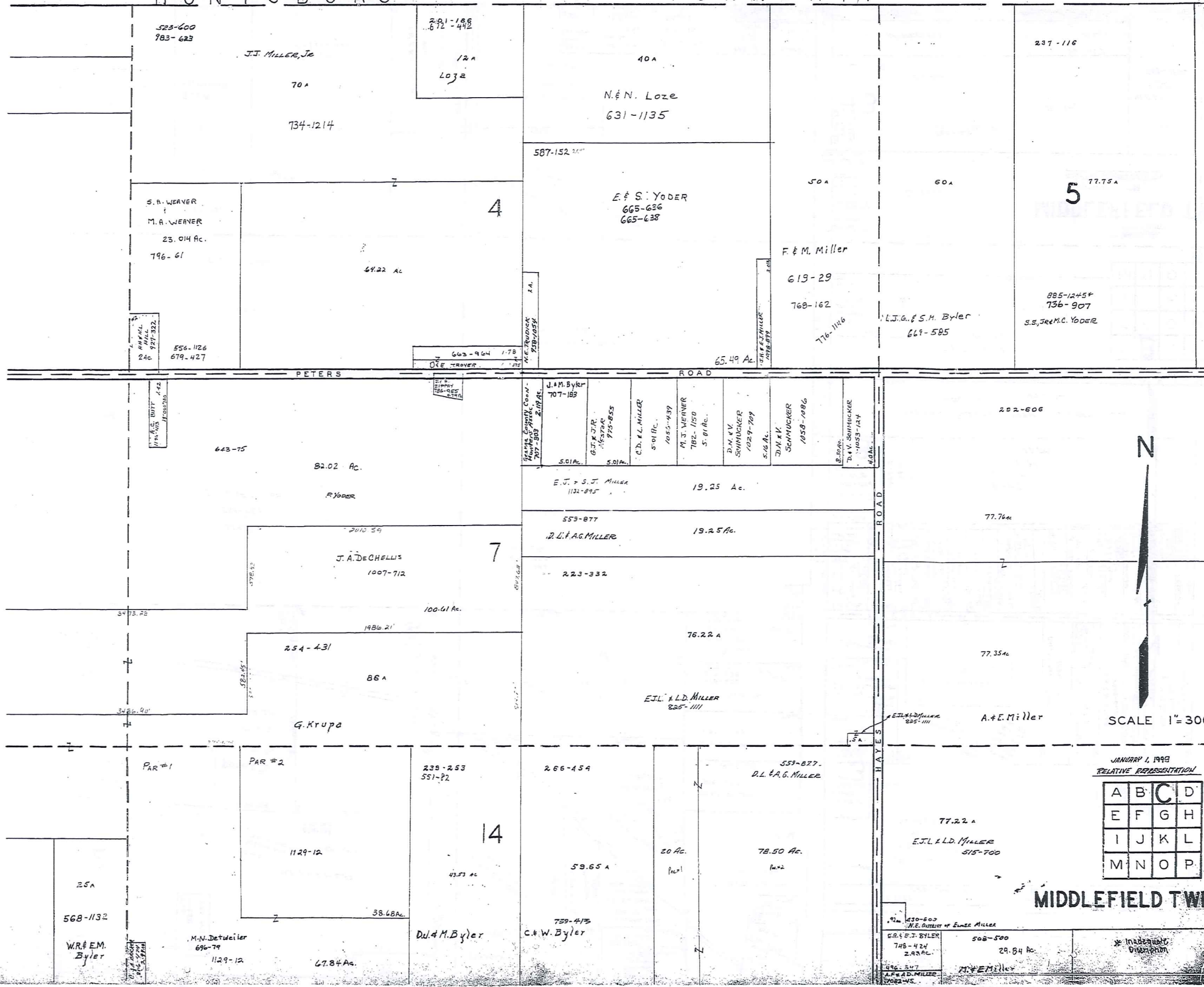
A	B	C	D
E	F	G	H
I	J	K	L
M	N	O	P

MIDDLEFIELD TWP

HUNTSBURG

TOWNSHIP

SCALE IN 1/100 OF AN INCH
1-800-345-7334



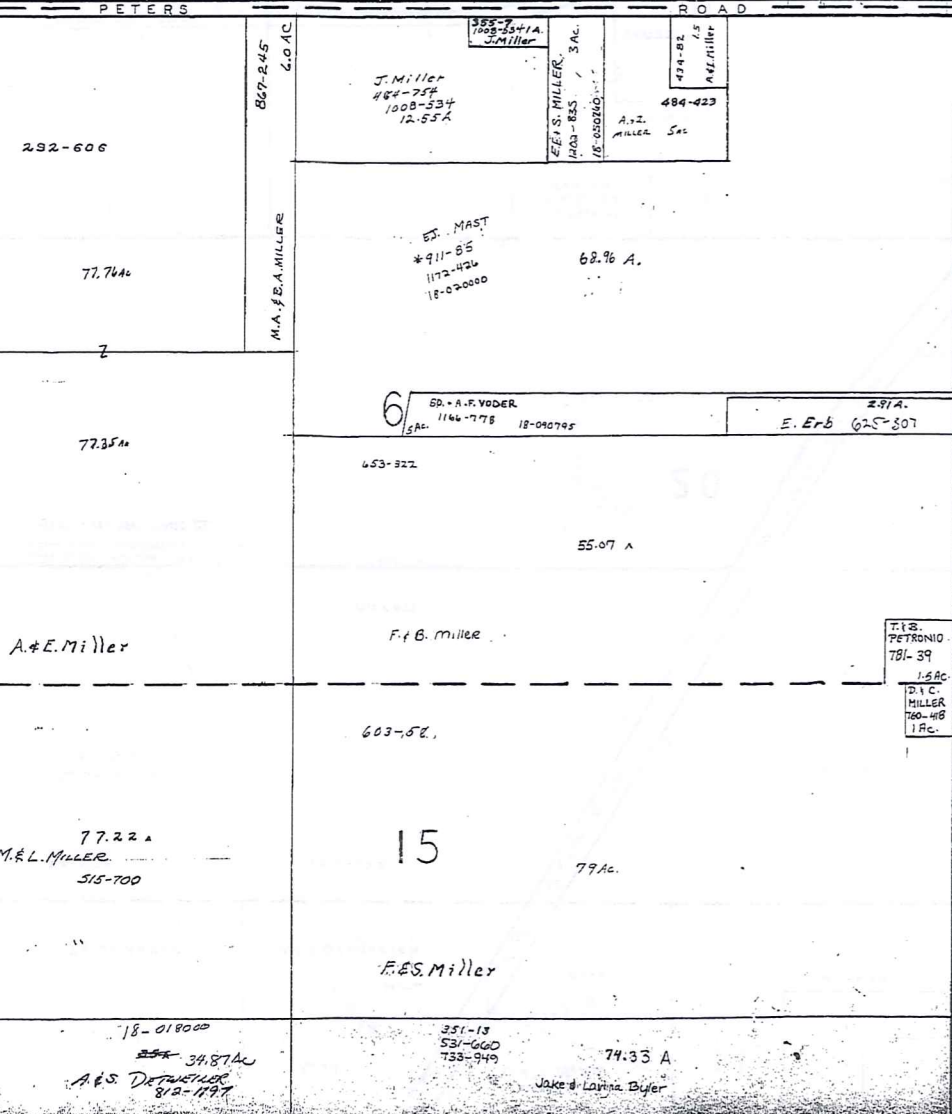
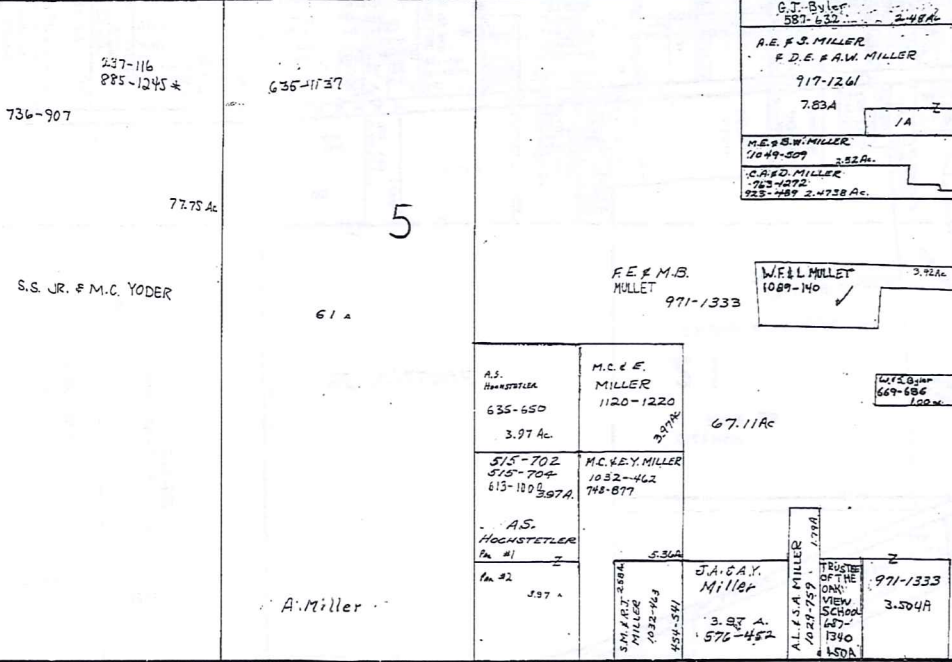
SCALE 1" = 300'

JANUARY 1, 1999
RELATIVE REPRESENTATION

A	B	C	D
E	F	G	H
I	J	K	L
M	N	O	P

MIDDLEFIELD TWP

HUNTSBURG TOWNSHIP



BUNDYSBURG ROAD
COUNTY
TRUMBULL

SCALE 1/10 OF AN INCH
1-800-345-7334

297



SCALE 1" = 300'

JANUARY 1, 1999
RELATIVE REPRESENTATION

* Inadequate Description

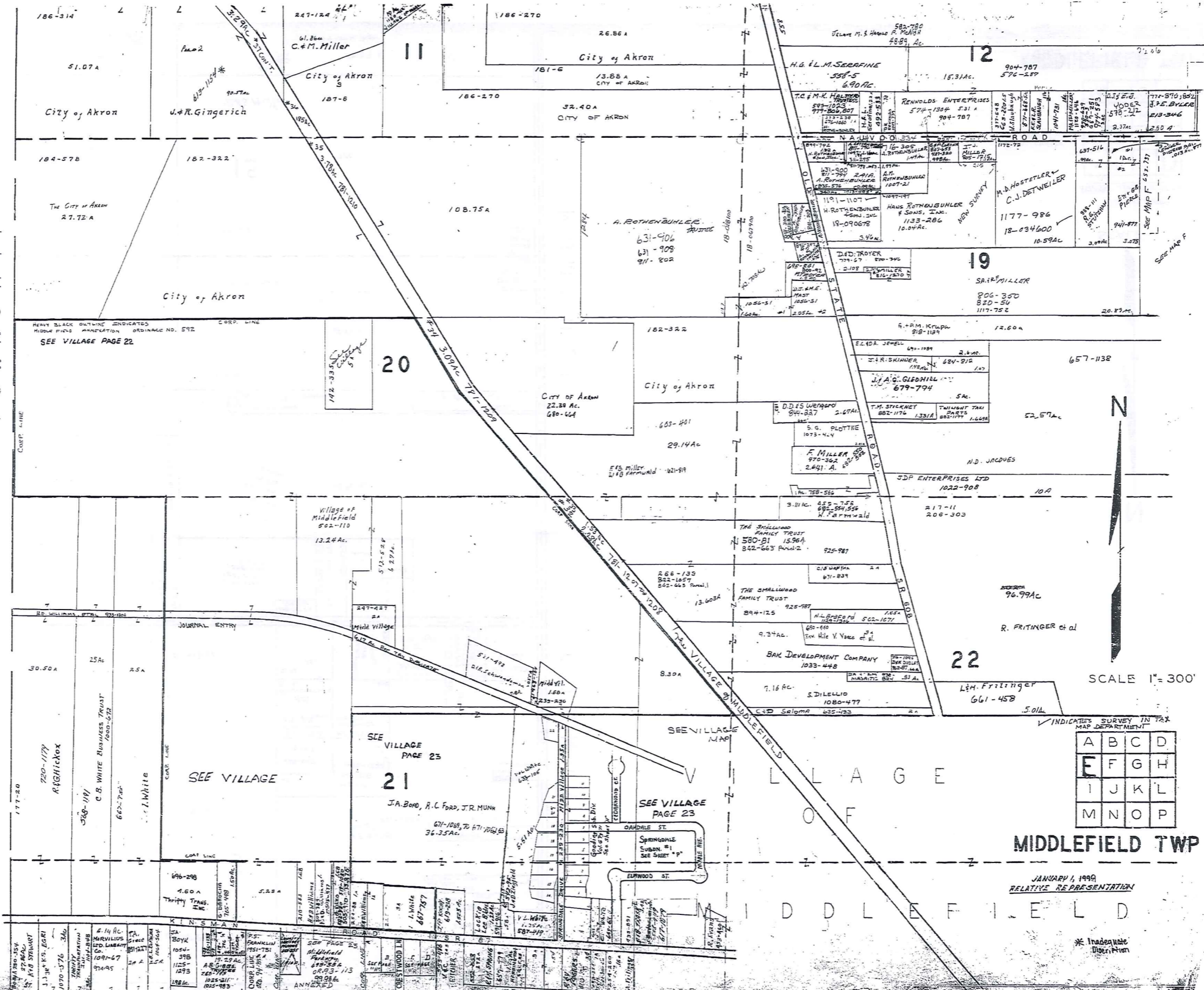
A	B	C	D
E	F	G	H
I	J	K	L
M	N	O	P

MIDDLEFIELD TWP.

BURTON TOWNSHIP

1-800-345-7334

SCALE IN YD OF AN INCH



SCALE 1" = 300'

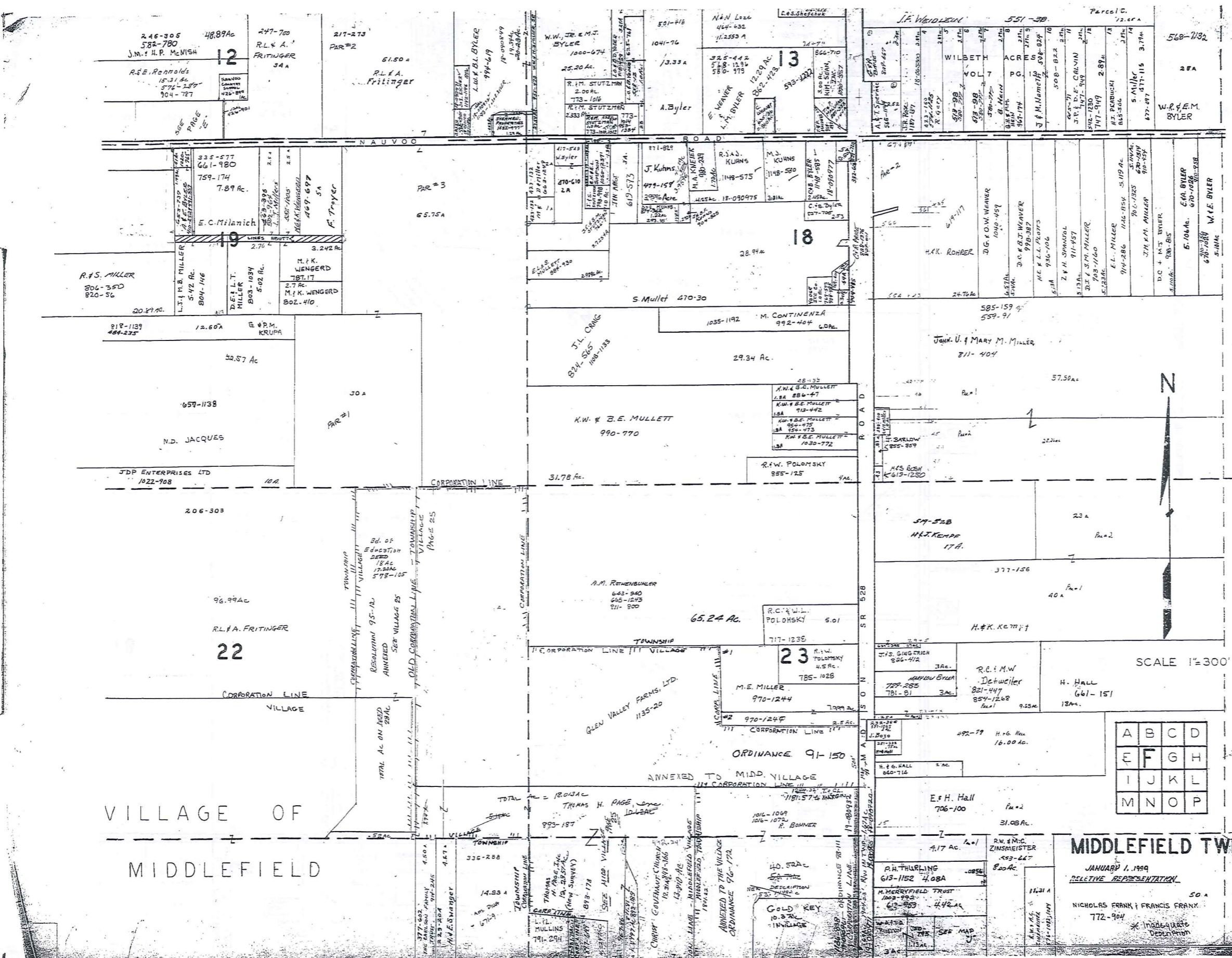
A	B	C	D
E	F	G	H
I	J	K	L
M	N	O	P

MIDDLEFIELD TWP

JANUARY 1, 1999
RELATIVE REPRESENTATION

* Inadequate
Description

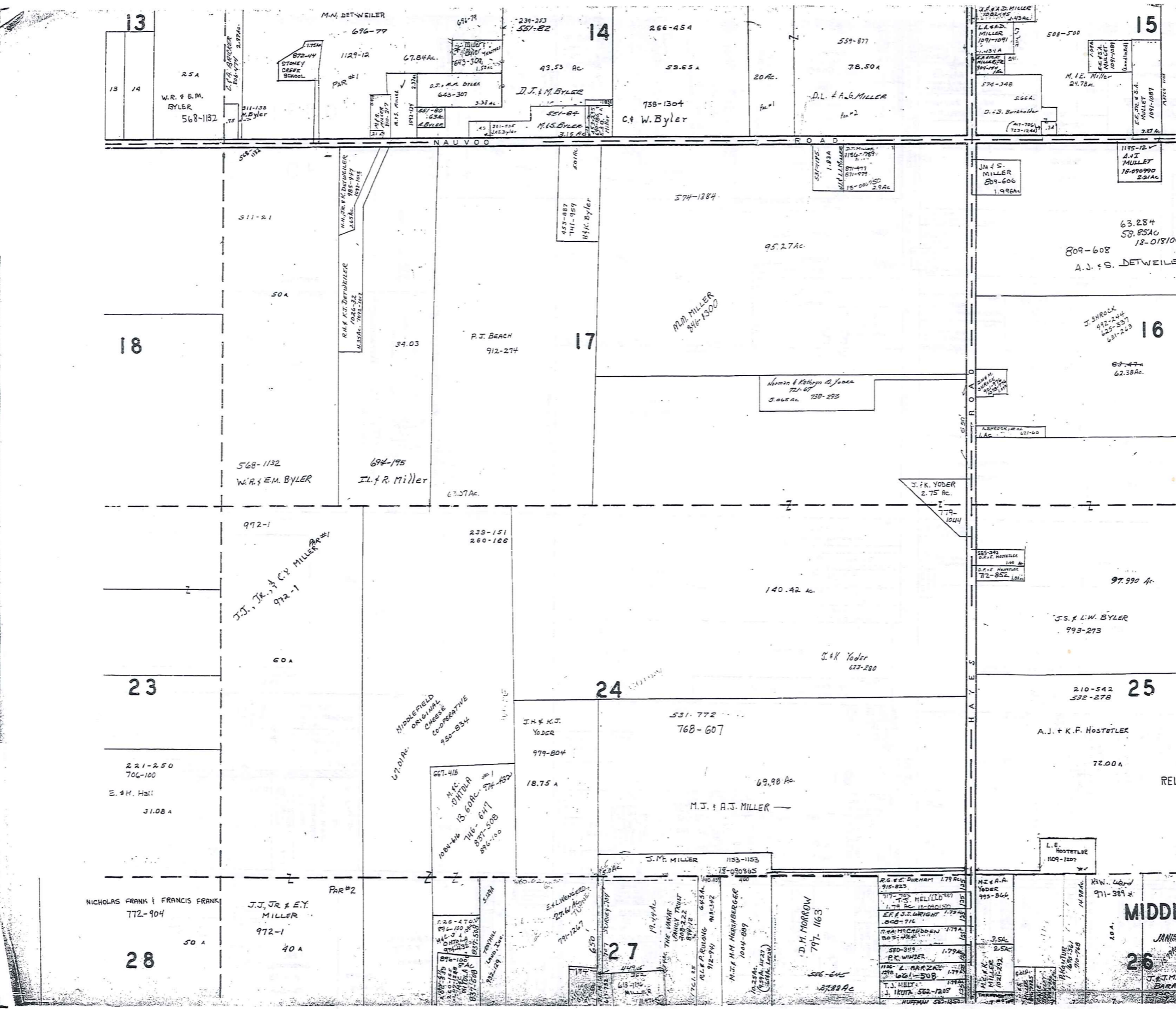
SCALE IN 1/10 OF AN INCH
1-800-345-7334



A	B	C	D
E	F	G	H
I	J	K	L
M	N	O	P

MIDDLEFIELD TWP
JANUARY 1, 1999
RELATIVE REPRESENTATION
NICHOLAS FRANK & FRANCIS FRANK
772-904
* Inadequate
Description

SCALE IN 1/80 OF AN INCH
1-800-345-7334



SCALE 1"=300'

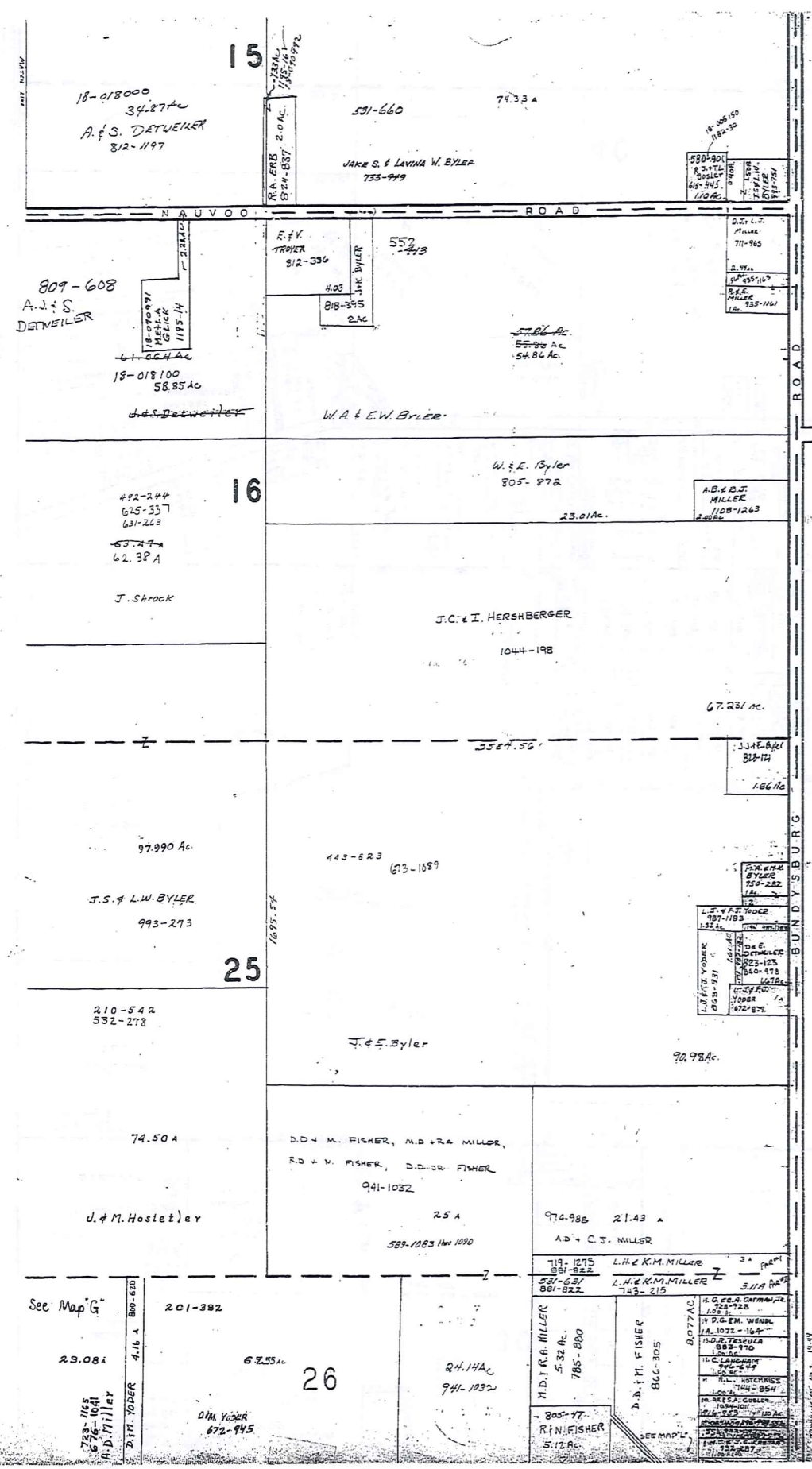
RELATIVE REPRESENTATION

A	B	C	D
E	F	G	H
I	J	K	L
M	N	O	P

MIDDLEFIELD TWP.

SCALE IN 1/10 OF AN INCH

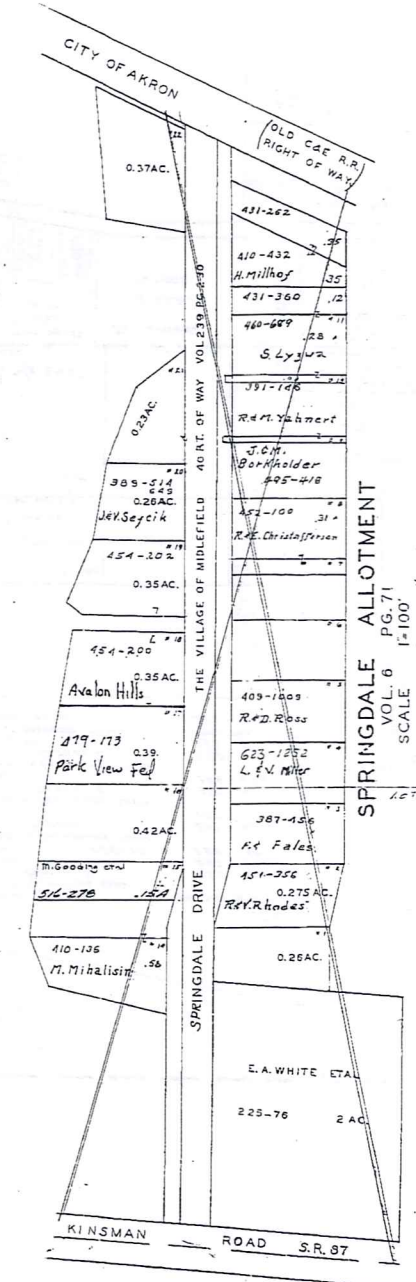
1-800-345-7334



TRUMBULL COUNTY

TRACT	ACRES	OWNER	REMARKS
1	0.37	W.A. & E.W. BYLER	
2	0.35	J.C. & I. HERSHBERGER	
3	0.35	J.S. & L.W. BYLER	
4	0.35	J.S. & L.W. BYLER	
5	0.35	J.S. & L.W. BYLER	
6	0.35	J.S. & L.W. BYLER	
7	0.35	J.S. & L.W. BYLER	
8	0.35	J.S. & L.W. BYLER	
9	0.35	J.S. & L.W. BYLER	
10	0.35	J.S. & L.W. BYLER	
11	0.35	J.S. & L.W. BYLER	
12	0.35	J.S. & L.W. BYLER	
13	0.35	J.S. & L.W. BYLER	
14	0.35	J.S. & L.W. BYLER	
15	0.35	J.S. & L.W. BYLER	
16	0.35	J.S. & L.W. BYLER	
17	0.35	J.S. & L.W. BYLER	
18	0.35	J.S. & L.W. BYLER	
19	0.35	J.S. & L.W. BYLER	
20	0.35	J.S. & L.W. BYLER	
21	0.35	J.S. & L.W. BYLER	
22	0.35	J.S. & L.W. BYLER	
23	0.35	J.S. & L.W. BYLER	
24	0.35	J.S. & L.W. BYLER	
25	0.35	J.S. & L.W. BYLER	
26	0.35	J.S. & L.W. BYLER	

315-363 Agreement of Restriction
 CRESTWOOD SUB.DIV.
 VOL. 6 PG. 77
 LOT 30
 SCALE 1"=200'



SPRINGDALE ALLOTMENT
 VOL. 6 PG. 71
 SCALE 1"=100'
 See Page 41"



SCALE 1"=300'

* Inadequate Description

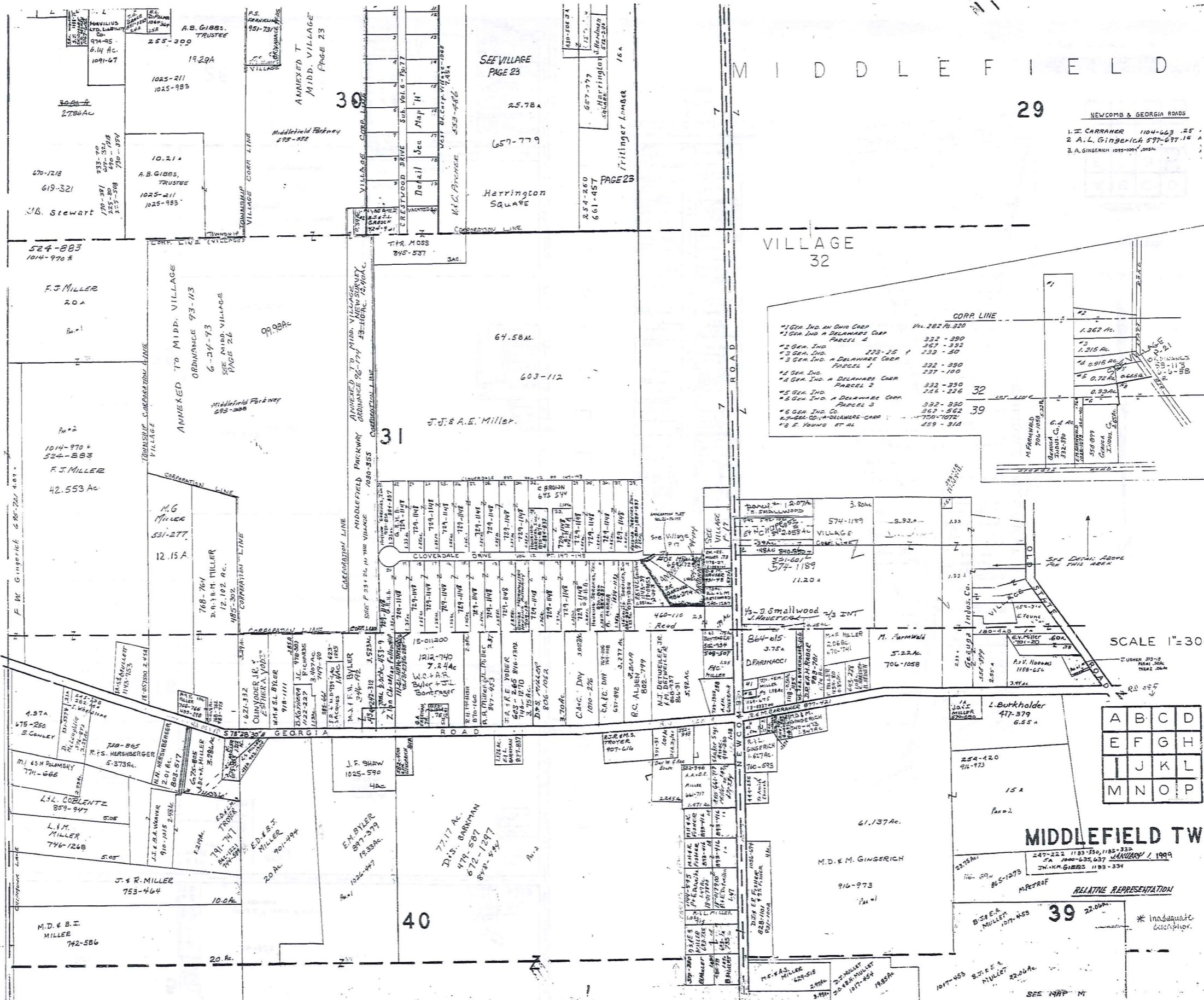
JANUARY 1, 1989

A	B	C	D
E	F	G	H
I	J	K	L
M	N	O	P

MIDDLEFIELD TWP.
 RELATIVE REPRESENTATION

BURTON TOWNSHIP

SCALE IN 1/10 OF AN INCH
1-800-345-7334



MIDDLEFIELD 29

NEWCOMB & GEORGIA ROADS
1. J. CARRAMER 1104-623 .25
2 A.L. GINGERICH 577-677.16
3. A. GINGERICH 1025-1025.00

VILLAGE 32
CORP. LINE
*1 GEN. IND. AN OHD CORP
*2 GEN. IND. A DELAWARE CORP
*3 GEN. IND. 222-25
*4 GEN. IND. A DELAWARE CORP
*5 GEN. IND. A DELAWARE CORP
*6 GEN. IND. CO. A DELAWARE CORP
*7 GEN. IND. A DELAWARE CORP
*8 E. YOUNG ET AL

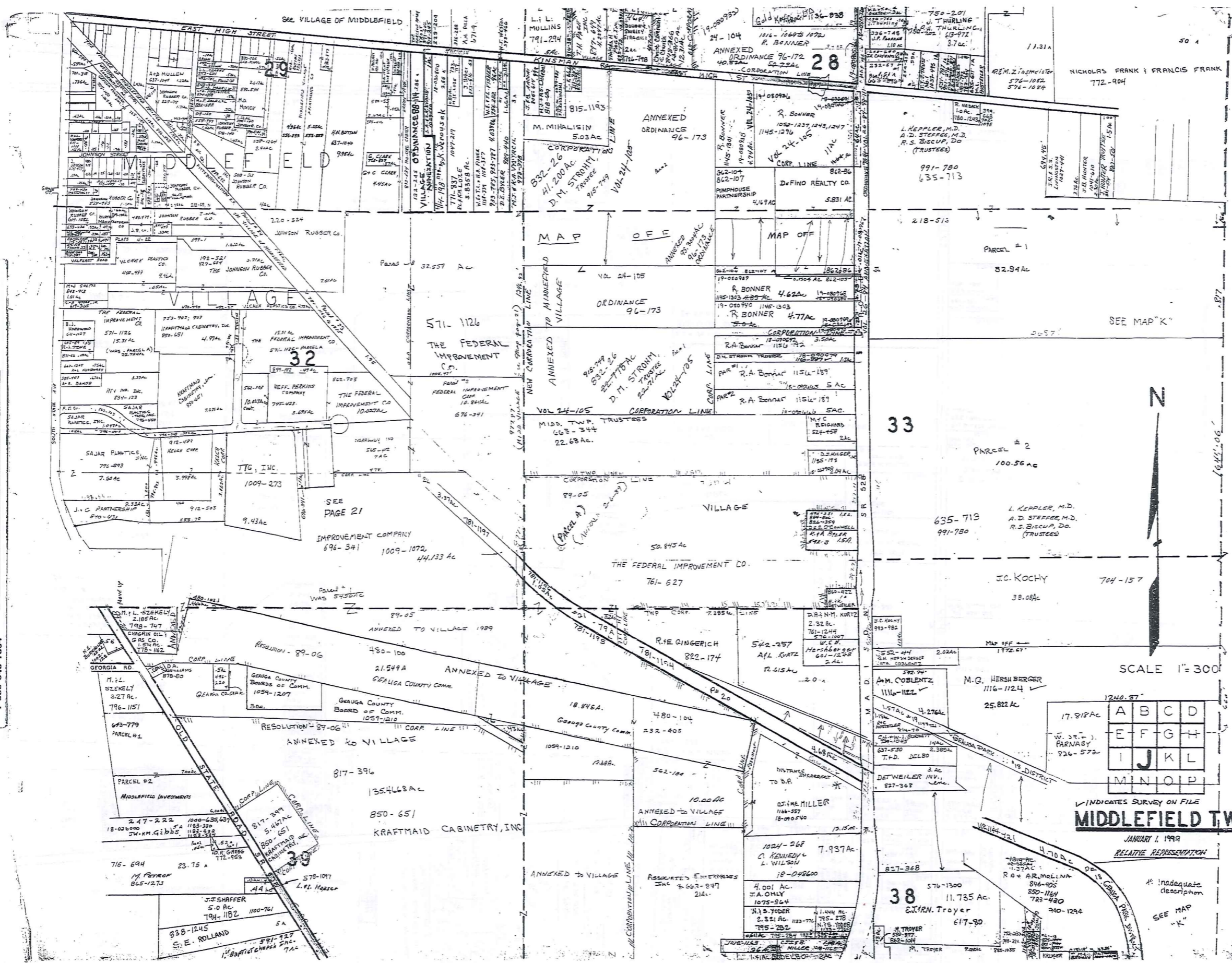
SCALE 1"=300'

A	B	C	D
E	F	G	H
I	J	K	L
M	N	O	P

MIDDLEFIELD TWP

RELATIVE REPRESENTATION
* Inadequate description.

SCALE IN 1/10 OF AN INCH
1-800-345-7334



303

A	B	C	D
E	F	G	H
I	J	K	L
M	N	O	P

MIDDLEFIELD T.W.P.

JANUARY 1, 1999

RELATIVE REPRESENTATION

* Inadequate description
SEE MAP "K"

28

27

26

50 Ac.
NICHOLAS FRANK FRANCIS FRANK
772-904

40 Ac.
PAR #2
J.J. JR & E.Y. MILLER
972-1

MIDDLEFIELD ORIGINAL
CHEESE CO-OPERATIVE
928-834

E.L. WINGGARD
27-624
711-1257

M.F. BYLER
974-570

R.C. MILLER
677-732

T.L. & J.E. MILLER
613-1176

D.M. Morrow
556-645
797-1165
27.88 Ac.

R.F. BOGGS
645-1188
571-284
1.75 Ac.

W.H.B. Scholz
332-597

R.W. Ward
971-399*

D.M. YODER
854-532

C.D. Weaver
621-707

SCALE IN 1/10 OF AN INCH

1-800-345-7334

SEE PAGE
J

218-513
82.94 Ac.

L. KEPPLER, M.D.
A.D. STEFFEE, M.D.
R.S. FISCUP, D.D.
(TRUSTEES)
653-713
991-780

100.56 Ac.

J.C. Kochy
704-157
38.08 Ac.

25.82 Ac.
1116-1124
1246.87'

17.818 Ac.
W. Jr. & J. PARNABY
826-572

W. J. Parnaby Jr.
980-1166
14.49 Ac.

16.22 Ac.

R.J. MATTHEWS
1142-40

J.K. Yoder
589-412
1/2 Int.

R.W. & S.M. GELTCH
934-752
968-44-55

M.C. HERSBERGER
1116-1124

17.818 Ac.

L.T.J. Kiviniemi
576-1193
2.8 Ac.

A.E. Byler
637-312

88.442 Ac.

R.W. & S.M. GELTCH
934-752
968-44-55

M.C. HERSBERGER
1116-1124

17.818 Ac.

W.F.N. Rosengren
537-1199

KINSMAN ROAD LTD
1156-542

J.T. M.M. MILLER
1144-190-
19-090378

34

18-070984
1182-571

KINSMAN RD LTD
32.79 Ac.

26.76 Ac.

37

81.94 Ac.

D.D.J. & M.S. Miller
556-1233
61.784 Ac.

VE JOHANNY

MILLER
427-384
773-173
949-207

D.M. Miller
647-928
26.61 Ac.

700-1145
E.E. & A.N. MILLER

E.A. Miller
512-1023 ; 810-908
84.56 Ac.

37

27.88 Ac.

J.A.B. Kaminski
542-725

P.A. BUTTARI
611-349
1096-832

E.H. & M.D. KEMPF
5.363 Ac.

J.D.L. & L.J. MILLER
1013-300

21.86 Ac.

37

27.88 Ac.

J.A.B. Kaminski
542-725

P.A. BUTTARI
611-349
1096-832

E.H. & M.D. KEMPF
5.363 Ac.

J.D.L. & L.J. MILLER
1013-300

21.86 Ac.

37

35

18.69 Ac.

P.A. BUTTARI
611-349
1096-832

E.H. & M.D. KEMPF
5.363 Ac.

J.D.L. & L.J. MILLER
1013-300

21.86 Ac.

35

26.80 Ac.

H. Howells, TRUSTEE
377-565
897-572

P.A. Buttari
611-349
1096-832

E.H. & M.D. KEMPF
5.363 Ac.

J.D.L. & L.J. MILLER
1013-300

21.86 Ac.

35

26.80 Ac.

H. Howells, TRUSTEE
377-565
897-572

P.A. Buttari
611-349
1096-832

E.H. & M.D. KEMPF
5.363 Ac.

J.D.L. & L.J. MILLER
1013-300

21.86 Ac.

35

304

A	B	C	D
E	F	G	H
I	J	K	L
M	N	O	P

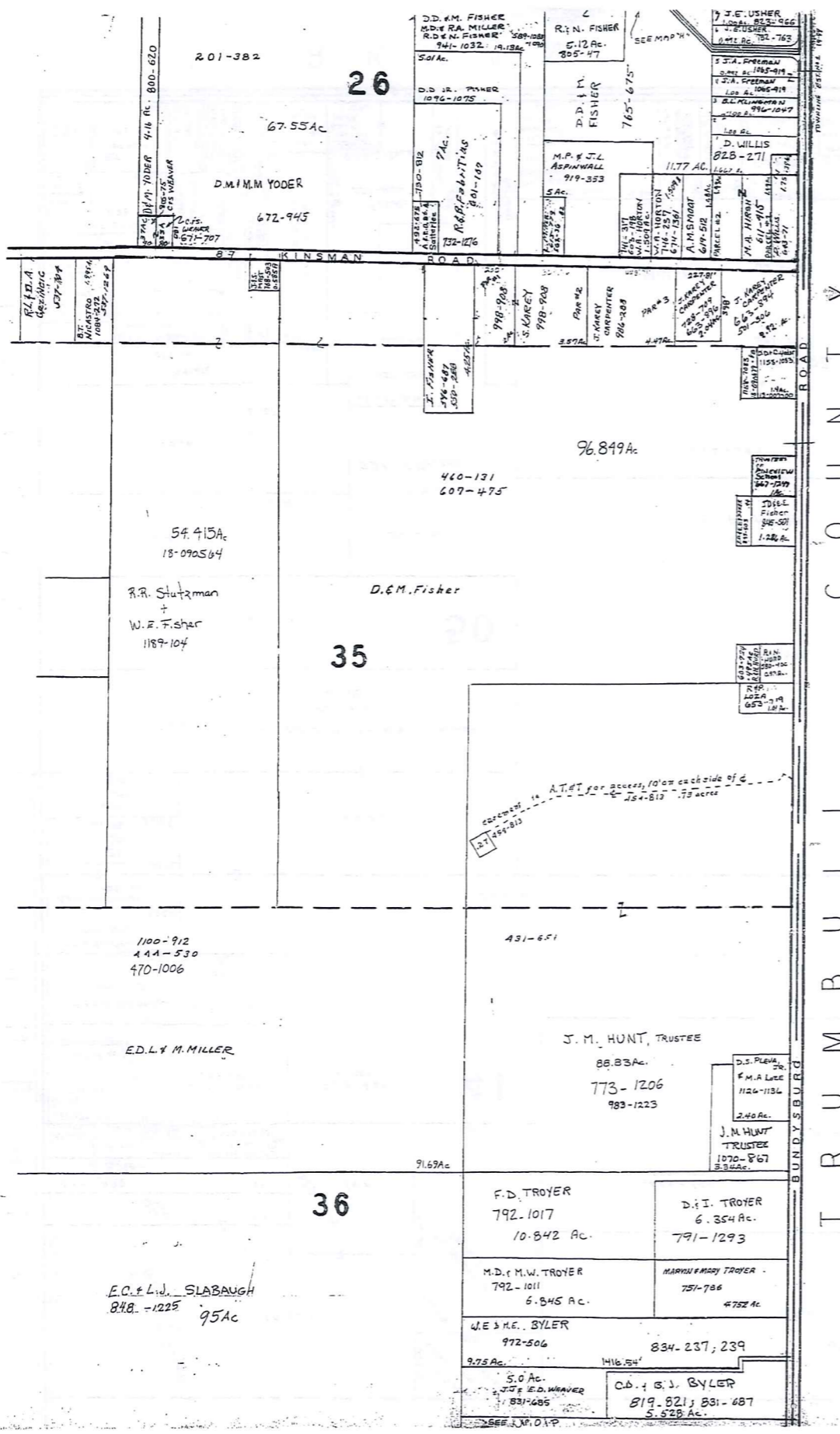
36
MIDDLEFIELD TWP.

JANUARY 1, 1999
RELATIVE REPRESENTATION

* Inadequate description

SCALE IN 1/10 OF AN INCH

1-800-345-7334



T R U M B U L L C O U N T Y



SCALE 1"=300'

JANUARY 1, 1999

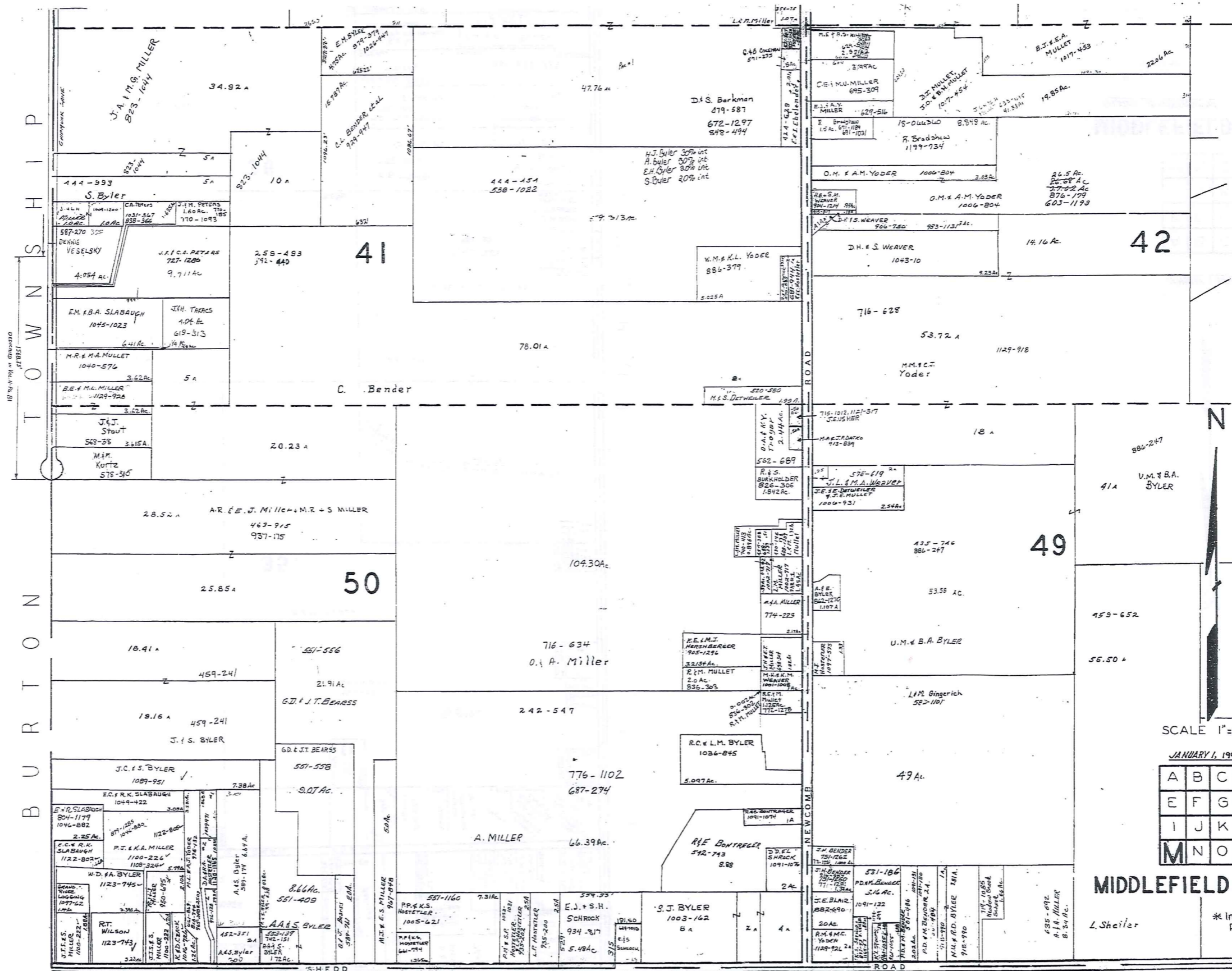
A	B	C	D
E	F	G	H
I	J	K	L
M	N	O	P

MIDDLEFIELD TWP.
RELATIVE REPRESENTATION

* Inadequate Description

305

SCALE IN 1/16 OF AN INCH
1-800-345-7334



SCALE 1"=300'

JANUARY 1, 1999

A	B	C	D
E	F	G	H
I	J	K	L
M	N	O	P

MIDDLEFIELD TWP.

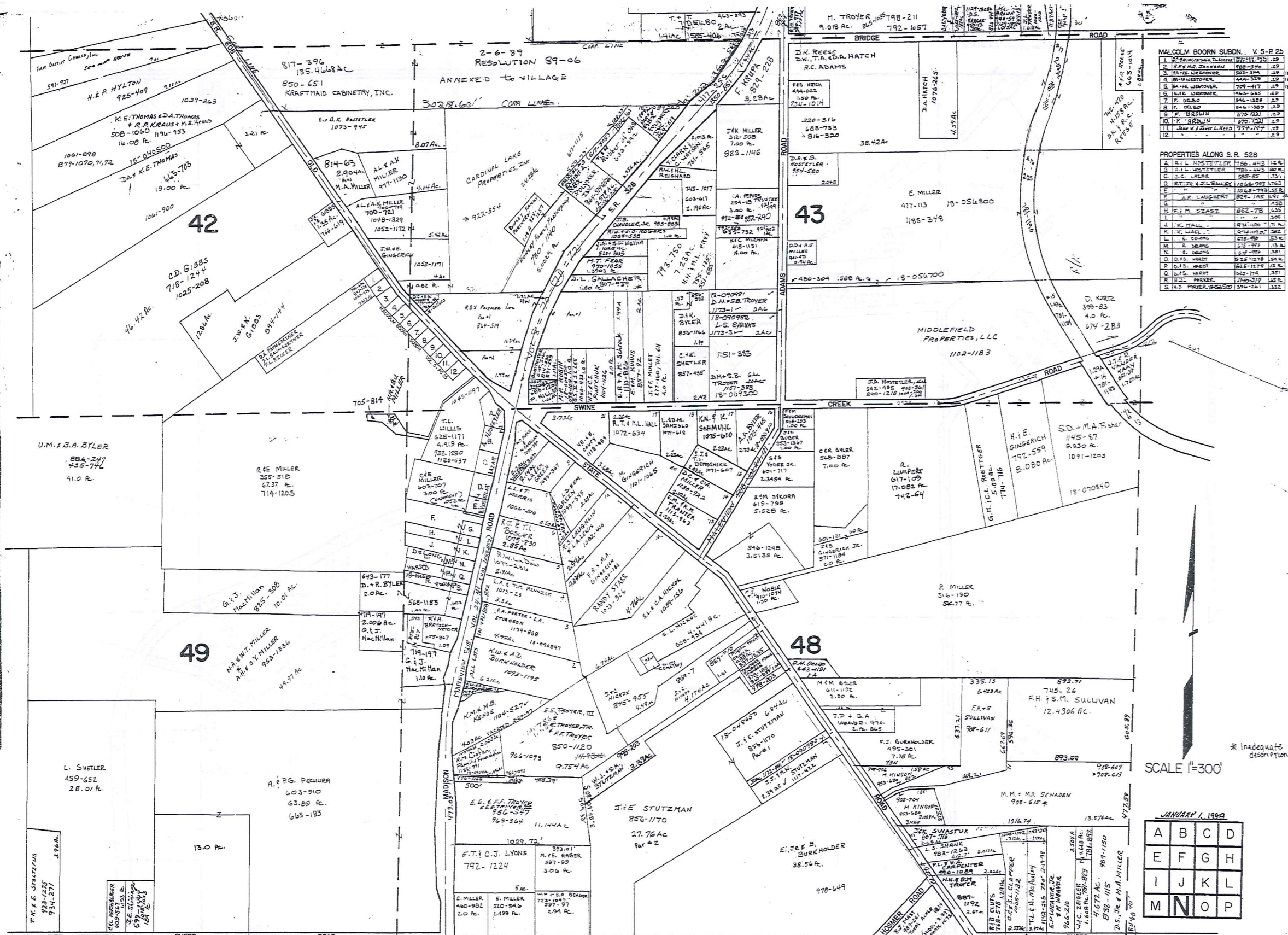
L. Sheiler * Inadequate Description

T O W N S H I P
B U R T O N

P A R K M A N T O W N S H I P

RELATIVE REPRESENTATION

SCALE IN 1/10 OF AN INCH
1-800-345-7334



MALCOLM BOORN SUBDIV. V. 5-P 25

1	W. H. BOORN	100-100	2.0
2	W. H. BOORN	100-100	2.0
3	W. H. BOORN	100-100	2.0
4	W. H. BOORN	100-100	2.0
5	W. H. BOORN	100-100	2.0
6	W. H. BOORN	100-100	2.0
7	W. H. BOORN	100-100	2.0
8	W. H. BOORN	100-100	2.0
9	W. H. BOORN	100-100	2.0
10	W. H. BOORN	100-100	2.0
11	W. H. BOORN	100-100	2.0
12	W. H. BOORN	100-100	2.0

PROPERTIES ALONG S. R. 528

A	R. L. HOSTETLER	176-443	12.8
B	R. L. HOSTETLER	176-443	12.8
C	R. L. HOSTETLER	176-443	12.8
D	R. L. HOSTETLER	176-443	12.8
E	R. L. HOSTETLER	176-443	12.8
F	R. L. HOSTETLER	176-443	12.8
G	R. L. HOSTETLER	176-443	12.8
H	R. L. HOSTETLER	176-443	12.8
I	R. L. HOSTETLER	176-443	12.8
J	R. L. HOSTETLER	176-443	12.8
K	R. L. HOSTETLER	176-443	12.8
L	R. L. HOSTETLER	176-443	12.8
M	R. L. HOSTETLER	176-443	12.8
N	R. L. HOSTETLER	176-443	12.8
O	R. L. HOSTETLER	176-443	12.8
P	R. L. HOSTETLER	176-443	12.8
Q	R. L. HOSTETLER	176-443	12.8
R	R. L. HOSTETLER	176-443	12.8
S	R. L. HOSTETLER	176-443	12.8

SCALE 1"=300'

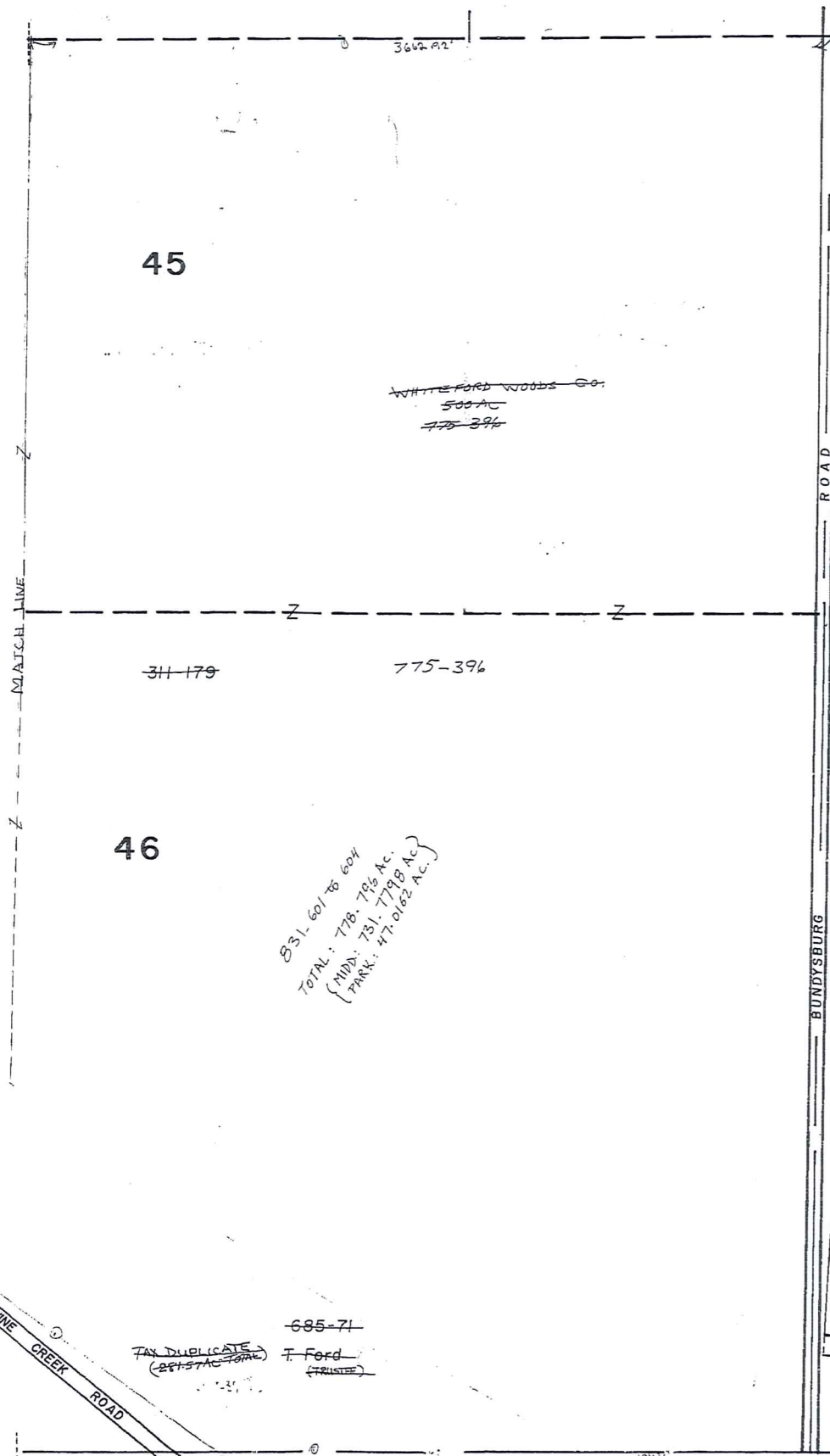
JANUARY 1, 1999

A	B	C	D
E	F	G	H
I	J	K	L
M	N	O	P

MIDDLEFIELD TWP. "N"
RELATIVE REPRESENTATION

P A R K M A N T O W N S H I P

SCALE IN 1/10 OF AN INCH
1-800-345-7334



45

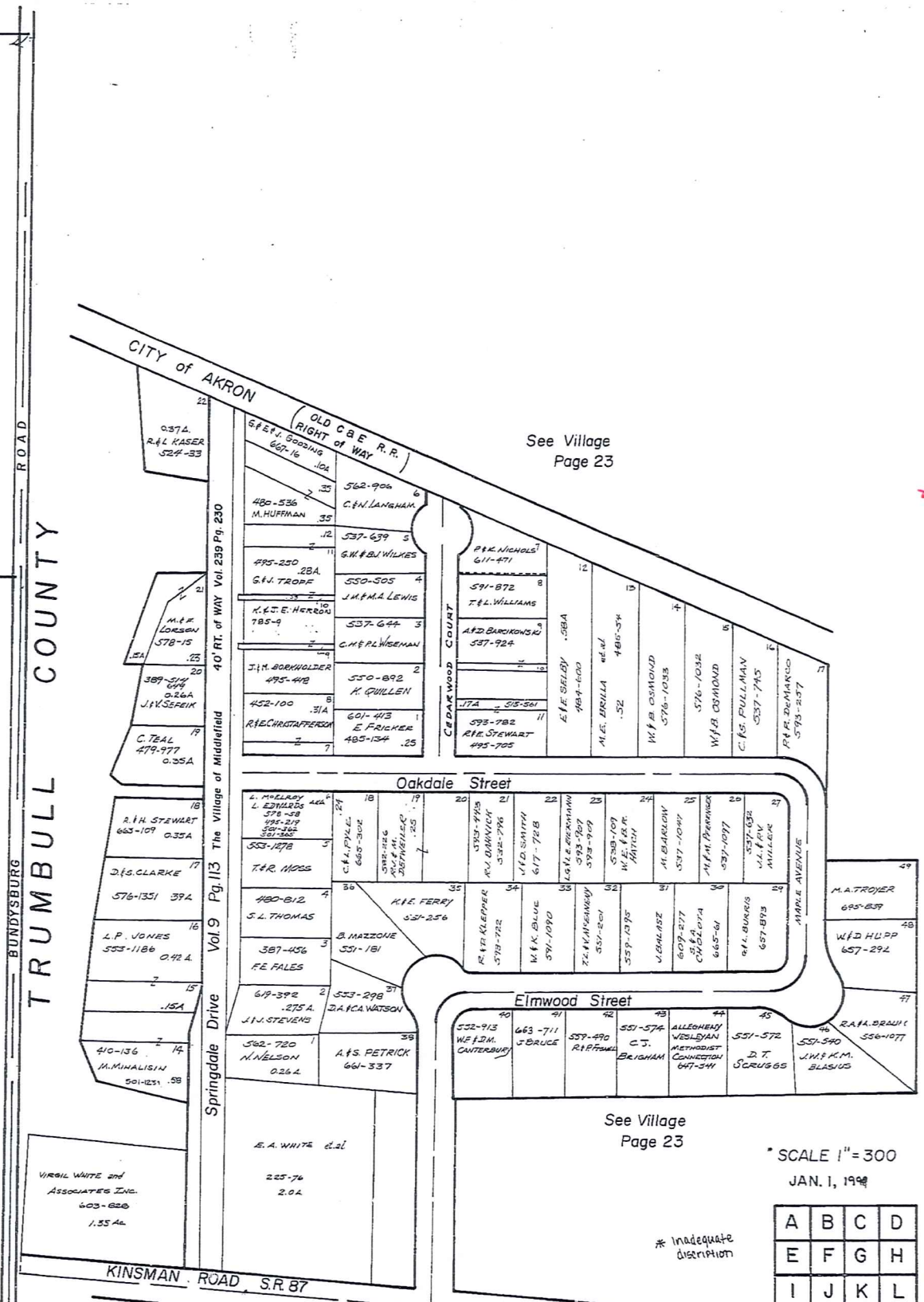
46

WHITEFORD WOODS CO.
500 AC
775-394

831-601 to 604
TOTAL: 778.706 AC.
(MUNY: 731.7798 AC.)
(PARK: 47.0262 AC.)

685-71
T. Ford
(TRUSTEE)

PARKMAN TWP



CITY OF AKRON

BUNDYSBURG ROAD
TRUMBULL COUNTY

Springdale Drive
Vol. 9 Pg. 115 The Village of Middlefield
Vol. 239 Pg. 230

See Village Page 23

See Village Page 23

SCALE 1" = 300
JAN. 1, 1998

A	B	C	D
E	F	G	H
I	J	K	L
M	N	O	P

MIDDLEFIELD TWP
RELATIVE REPRESENTATION

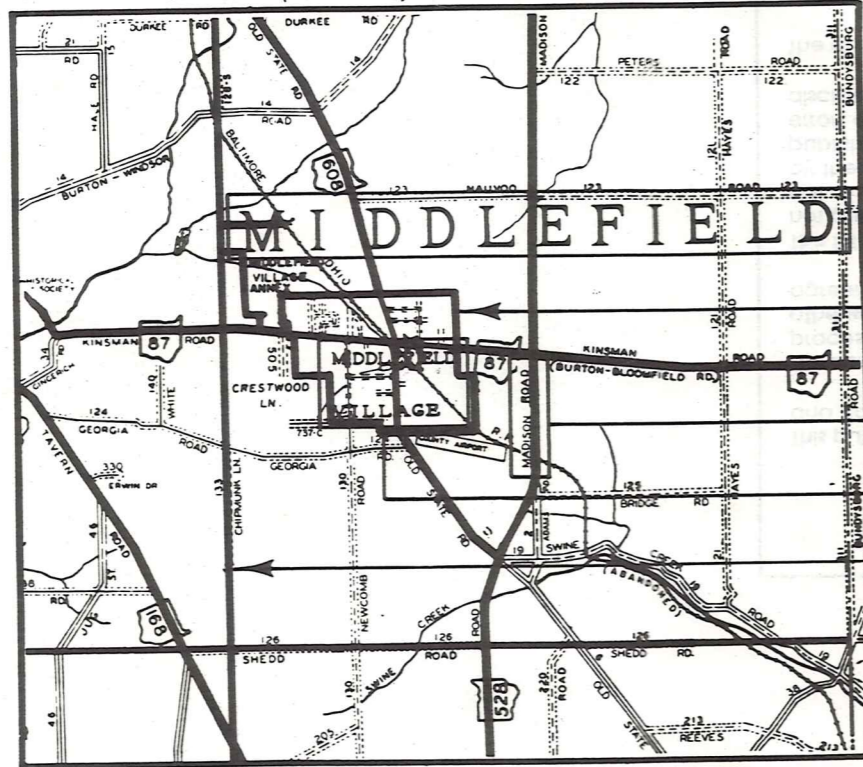
309

* Inadequate distribution

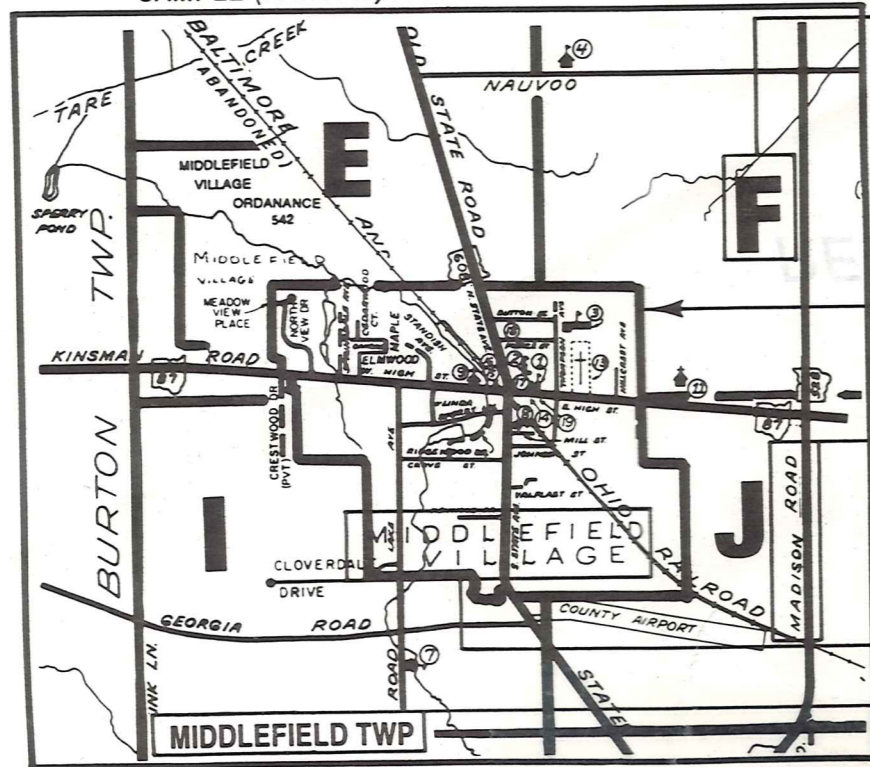
Explanation and Use Sheet for Geauga County, Ohio

A

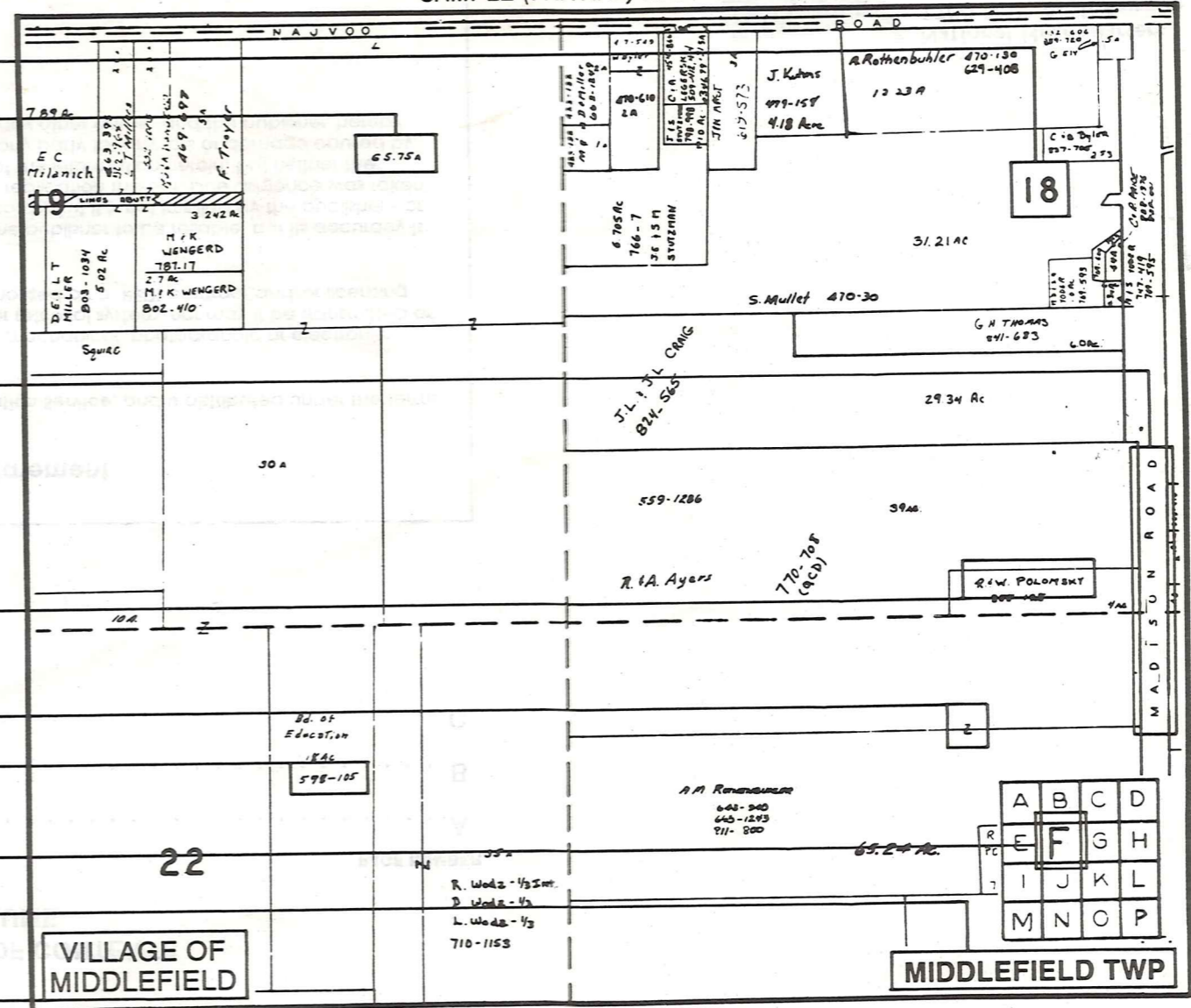
SAMPLE (PARTIAL) COUNTY INDEX MAP



SAMPLE (PARTIAL) MUNICIPALITY INDEX MAP



SAMPLE (PARTIAL) MAP PAGE



- Tract Lot Number
- Acreage
- Township Name
- Village Boundary
- Street Name
- Village Name
- Township Boundary
- Owners Name
- Denotes Continuous Ownership
- Deed Book & Page
- Map Page Number
- Township Name
- Village Name

- Village Boundary
- Street Name
- Village Name
- Township Name

USE OF THE MAP VOLUME

1. LOCATE THE GENERAL AREA OF INTEREST ON THE COUNTY INDEX MAP AND NOTE THE MUNICIPALITY NAME (TOWNSHIP OR VILLAGE).
 2. REFER TO THE TABLE OF CONTENTS AND NOTE THE BEGINNING ATLAS PAGE NUMBER FOR THE MUNICIPALITY OF INTEREST.
 3. TURN TO THE PAGE INDICATED, ON THIS PAGE WILL APPEAR AN INDEX MAP FOR THAT MUNICIPALITY.
 4. LOCATE THE GENERAL AREA OF INTEREST AND NOTE THE MAP PAGE NUMBER. THIS MAY BE EITHER A LETTER OR A NUMBER.
 5. MAP PAGES ARE IN ALPHABETICAL (OR NUMERICAL) SEQUENCE FOLLOWING THE MUNICIPALITY INDEX MAP. FOLLOW SEQUENCE TO THE MAP PAGE INDICATED.
 6. LOCATE SPECIFIC PARCEL OF INTEREST AND NOTE THE DESIRED INFORMATION.
- NOTE: ON SOME MAPS YOU MAY BE REFERRED TO A DETAIL SHEET SHOWING AN ENLARGEMENT OF THE AREA. THESE MAPS ARE FOUND AT THE END OF THE REGULAR MAP PAGES IN EACH MUNICIPALITY IN EITHER ALPHABETICAL OR NUMERICAL SEQUENCE.
- NOTE: CHARDON VILLAGE HAS TITLE SHEETS. TO LOCATE OWNERS NAME, NOTE THE PARCEL NUMBER, REFER TO THE TITLE PAGE FOLLOWING THE MAP OF INTEREST, FOLLOW NUMERICAL SEQUENCE TO THE PARCEL NUMBER OF INTEREST AND NOTE THE DESIRED INFORMATION. IN ALL OTHER MUNICIPALITIES THE OWNERS NAME APPEARS ON THE MAP PAGE.